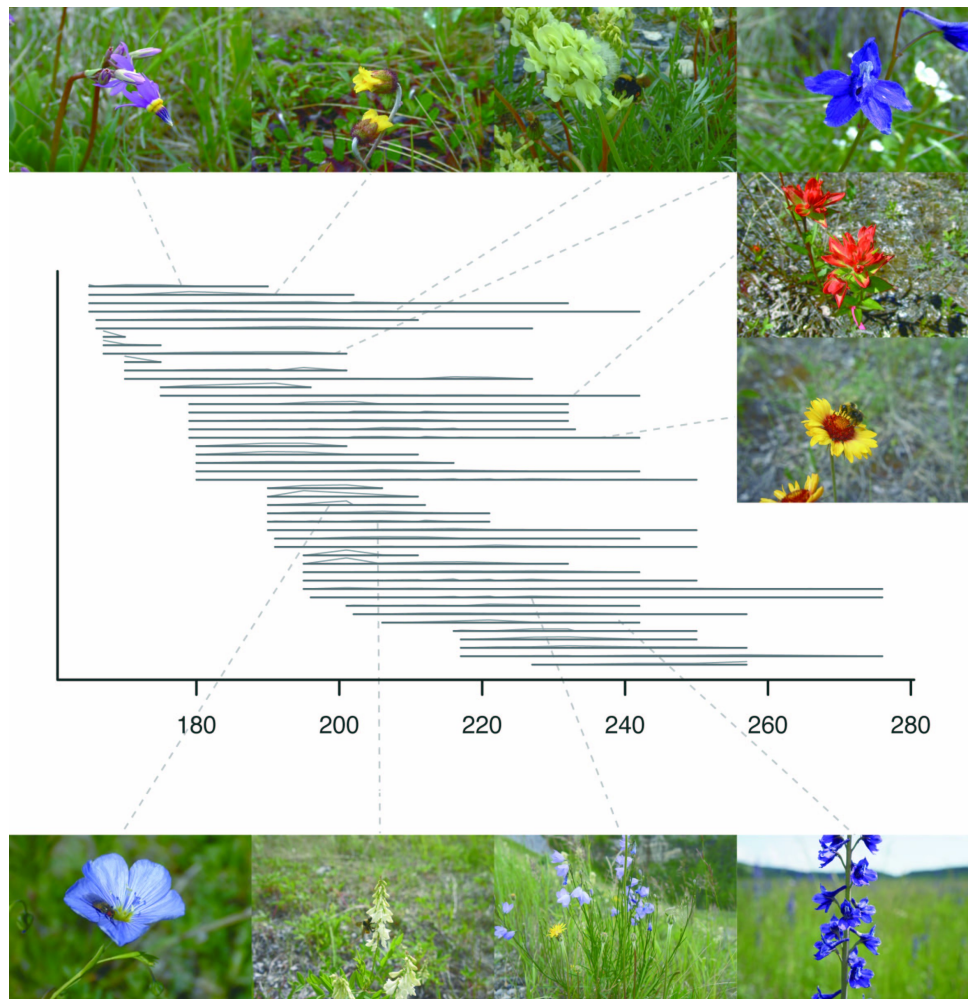


Ecology and Evolution of flowers

Takashi IDA [Environmental Sciences Course]



Flowering phenology of plant community

My research involves the ecology and evolution of plant reproductive strategy, with focuses on the mutualism between plants and pollinators and resource utilization of plants. The plant communities in temperate regions are subject to strong seasonality in both physical conditions, which affect resource availability, and the abundance and variety of competing plants and flower-visiting insects, which influence pollen transport. I will take advantage of this temporal variation to develop an integrated perspective on physiology and ecology of pollen and resource limitation of plants reproduction and their implications for selection on plant reproductive strategies.

Keywords : Ecology and Evolution, Phenology, Pollination, Mating system, Resource allocation